



Rsam Platform

What's New in this Release

Version 10.0 | December 05, 2019

© 2019 Relational Security Corporation dba Galvanize. All rights reserved

www.wegalvanize.com

Contents

What's New in Rsam 10.0	3
Activity Centers.....	3
Easy to Build	3
Grouping Tasks (widgets)	4
Color and Numeric Indicators	4
Enhanced Home Page Designer	5
Drag and Drop Designer	5
Multi-column Layout	6
Collapse Widgets on Load	6
View Widgets in Full Screen	7
Set Landing Page	7
Widget-Level Access based on Roles	7
Enhanced Scheduler	7
View Current Running Events	7
Task Groups	8
View Event History	8
Other Improvements.....	8
Monitoring Import Progress.....	8
Optimized Search	8
Enhancements in Rsam 9.2	9
User Interface Enhancements.....	9
Integration with HighBond	10
Custom Logo for Top Menu	10

What's New in Rsam 10.0

Rsam version 10.0 comes with major enhancements to certain platform features and has an improved look and feel. These enhancements are as follows:

- [Activity Centers](#)
- [Enhanced Home Page Designer](#)
- [Enhanced Scheduler](#)
- [Other Improvements](#)

Activity Centers

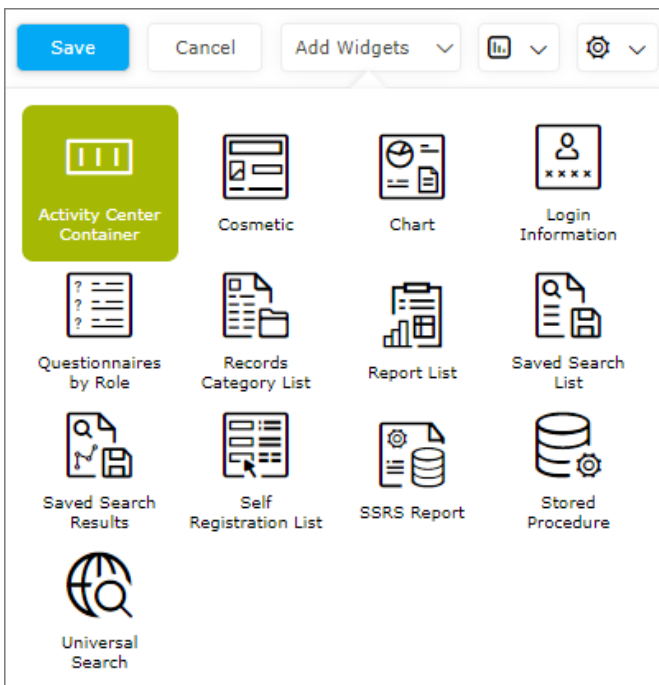
Activity Center is a new feature of Rsam Home Pages that makes it easier for end-users to access their tasks or other related information from a central location. This feature creates a better end-user experience by grouping together widgets for quick and easy navigation to tasks and activities. The major highlight of the feature is that users can access all their activities from a single page, without having to navigate to other home page tabs.

Some key features of Activity Centers are as follows:

- [Easy to Build](#)
- [Grouping Tasks \(widgets\)](#)
- [Color and Numeric Indicators](#)

Easy to Build

Activity Centers are highly configurable, easy to build, and easy to associate widgets to. Administrators can add Activity Centers to home pages from the **Add Widgets** menu in the **Edit** mode.



Grouping Tasks (widgets)

Administrators can associate widgets to Activity Centers and users can view details as well as navigate to pending tasks from the associated widgets.

Security Incident Response Edit

65
SECURITY TASKS

51
SECURITY RULES

58
SECURITY INCIDENTS

51
PLAYBOOK RULES

541
SECURITY EVENTS

Events by Workflow state

Events by Month

Top 5 IP Addresses in Event Data

Events by Source

Events List

Cancel Add Open Delete Assign... Action Go to

	Event ID	State	Event Description
<input type="checkbox"/>	EVENT-2016-165	SIRP: Event Closed	DLP Alert 1001
<input type="checkbox"/>	EVENT-2016-166	SIRP: Event Closed	DLP 1002 - Privacy
<input type="checkbox"/>	EVENT-2016-165	SIRP: Event Pending Review	DLP Alert 1001
<input type="checkbox"/>	EVENT-2016-166	SIRP: Event Pending Review	DLP 1002 - Privacy
<input type="checkbox"/>	EVENT-2016-167	SIRP: Event Closed	Vendor Lost Equipment
<input type="checkbox"/>	EVENT-2016-165	SIRP: Event Pending Review	DLP Alert 1001

Results: 541 Records Per Page: 50 Page 1 of 11 Limit total results to:

Color and Numeric Indicators

When configuring Activity Centers, Administrators can set numeric and color indicators to draw attention to tasks and data.

Security Incident Response Edit

65
SECURITY TASKS

51
SECURITY RULES

58
SECURITY INCIDENTS

51
PLAYBOOK RULES

Enhanced Home Page Designer

Administrators can use the enhanced Home Page designer to build and manage home page tabs in a much easier way.

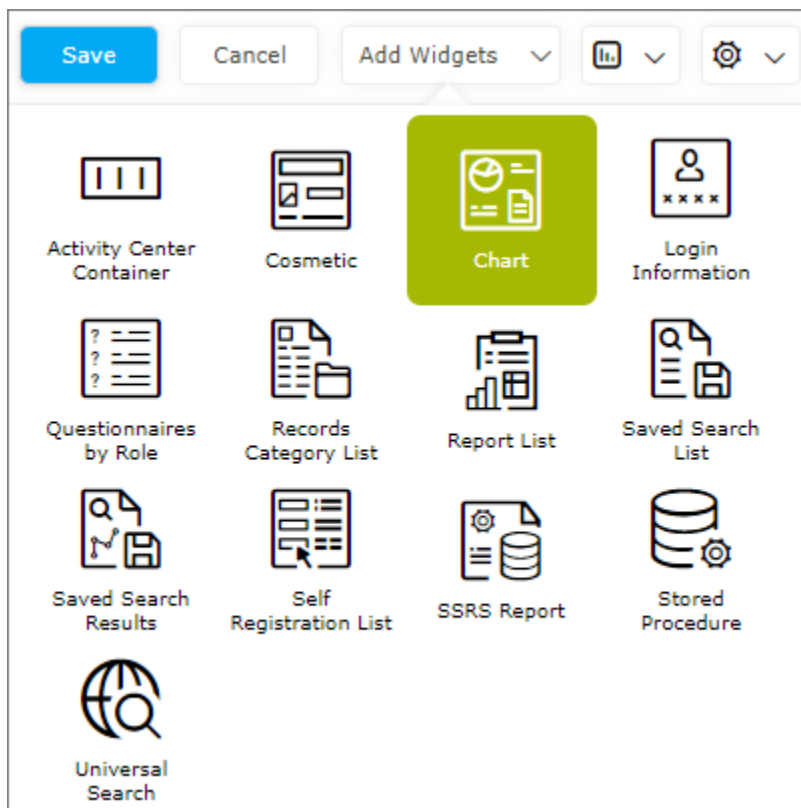
Administrators can create home pages, drag and drop widgets right on to the page, and visualize how the widgets appear in rendering mode without having to navigate back to the home page and administrative pages. Real-estate on the pages can now be better utilized with the help of expand/collapse feature and the resize arrows within widgets.

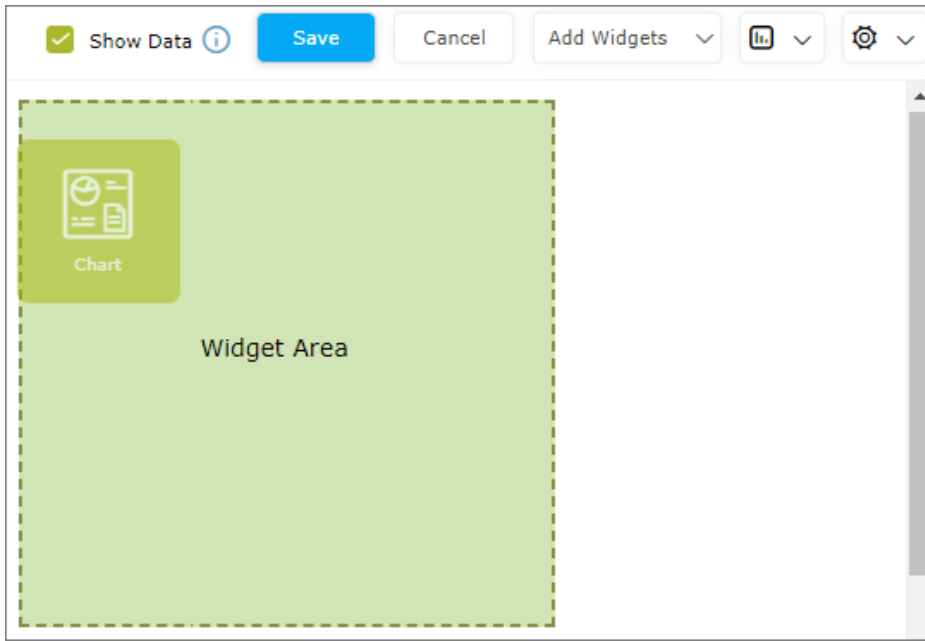
Some key features of the new Home Page designer are as follows:

- [Drag and Drop Designer](#)
- [Multi-column Layout](#)
- [Collapse Widgets on Load](#)
- [View Widgets in Full Screen](#)
- [Set Landing Page](#)
- [Widget-Level Access based on Roles](#)

Drag and Drop Designer

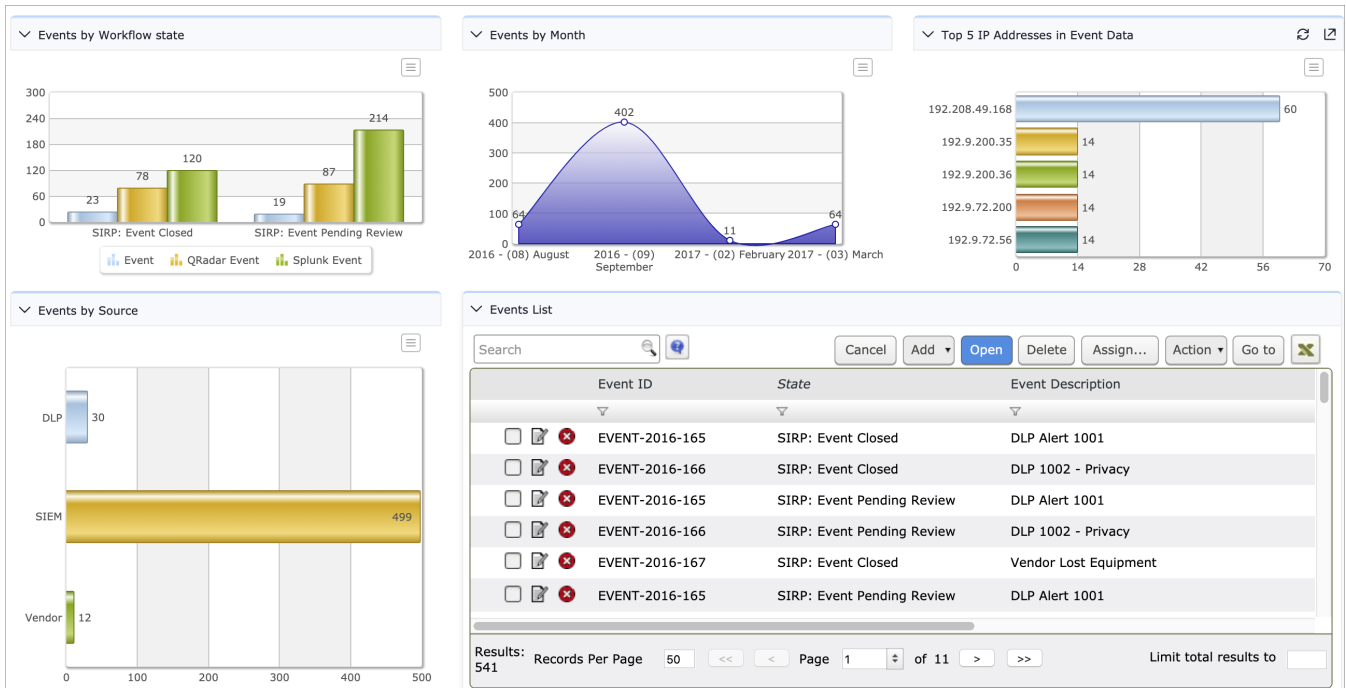
The drag-and-drop designer is extremely easy to use and also provides a real-time view of how the widgets look while rendering on the page. To add widgets, open the page in **Edit** mode, click **Add Widgets** and drag and drop the required widget on to the page.





Multi-column Layout

The earlier versions of Rsam had a two-column layout limitation where users could add only two widgets per row on a page. With Rsam version 10, this limitation is removed and is highly beneficial when there are more widgets to display.



Collapse Widgets on Load

Administrators can set widgets to be collapsed when user loads a page. This helps to load pages faster. Users can expand the widgets when they want to see the data.

View Widgets in Full Screen

The **Maximize** (🔍) feature allows you to view the widget in full screen mode. This allows for better visibility of data when a widget contains lot of information or for presentation purposes.

Set Landing Page

In Rsam version 10, Administrators and end users can set a home page to display as the landing page when they log in. This can be set from the page or from the **Preferences** menu. If no landing page is set, users land on the page that is first in the order of assigned pages.

Widget-Level Access based on Roles

Administrators can set widget-level access, based on user roles and Rsam dynamically shows or hides the widgets based on the role of the user logged in. If a logged in user has access to a page but does not have access to a widget on the page, Rsam hides the widget and displays all the other widgets.

Enhanced Scheduler

Rsam Scheduler has been enhanced with more features and an advanced user interface. Administrators can monitor real-time progress of currently running events and also view the history of prior executions. Rsam Scheduler also provides the option to create Task Groups and associate schedules and tasks to them; all of this is available on an easy-to-navigate Scheduler interface.

Some key features of the new Scheduler are as follows:

- [View Current Running Events](#)
- [Task Groups](#)
- [View Event History](#)

View Current Running Events

This enhancement gives Administrators better visibility of the tasks running currently in the background, including manual imports, scheduled handler execution, and more.

Dashboard Schedules Tasks Task Groups Event History									
Events								Include Tasks Upcoming : in 30 Minutes	🔄
🔍 Event Name	Type	Scope	Executed By	Start Date and Time ↕	Duration	Progress ⓘ	Action		
User Import	Data Import	Task Group	Administrator	2019-10-21 15:35:49	12m 25s	<div style="width: 0%;"><div></div></div> 0%	🔴		
50 Recs Import	Data Import	Task	Administrator			✓ Completed	View Event History ⓘ		
1K Process Records Import - CC Payment	Data Import	Task	Administrator			✓ Completed	View Event History ⓘ		

Task Groups

Administrators now have the ability to create Task Groups. A task group is, in simple terms, a collection of tasks. A task group can be created and multiple tasks can be associated to it. Administrators can control the execution sequence of the tasks in a task group and stop tasks if prior tasks fail.

Demo Security Operation Import					
Demo Security Operation Import					
Associated Tasks					
<input type="checkbox"/> Show All <input type="button" value="Update"/> <input type="button" value="Cancel"/>					
<input checked="" type="checkbox"/>	Name	Sequence	Condition	Type	
<input checked="" type="checkbox"/>	Demo Import Assets	1	<input type="checkbox"/> Stop All if fail	Data Import	
<input checked="" type="checkbox"/>	Demo Calculate Zone Ranges for Assets	2	<input type="checkbox"/> Stop All if fail	Risk Analytics	
<input checked="" type="checkbox"/>	Demo Import Vulnerabilities	3	<input type="checkbox"/> Stop All if fail	Data Import	

View Event History

Administrators also can view run history and detailed logs of the completed events.

Event History					
[Process Records Import Tasks - Another]					
<input checked="" type="checkbox"/>	Start Date and Time	End Date and Time	Duration	Status	
	2019-10-22 12:03:30	2019-10-22 12:13:39	10m 9s	✓	
	2019-10-21 17:46:36	2019-10-21 18:04:33	17m 57s	✓	
	2019-09-09 10:06:04	2019-09-09 10:11:24	5m 20s	✓	
	2019-09-08 10:06:05	2019-09-08 10:11:19	5m 14s	✓	

The standard user can also view the currently running manual imports and the logs of the completed imports (only those imports executed by the logged-in user).

Other Improvements

Monitoring Import Progress

When the import process is in progress, the user can now see the real-time progress of the import with the Component Pop-up. The Component Pop-up appears when the import process begins and displays progress with component level details.

152023.RecordImport.20191120T110047		
Importing records	100% 500 out of 500	Completed
Attribute binding	Bulk processing	Running
Workflow simulation for new records		Pending

Also, manual imports will now execute in the background and the user can go to other tabs or modules in Rsam without having to wait for the import process to complete.

Optimized Search

Search has been optimized to load search results faster and has direct impacts in Navigator pages, charts, Lookup attributes, Reports, and other related areas.

Enhancements in Rsam 9.2

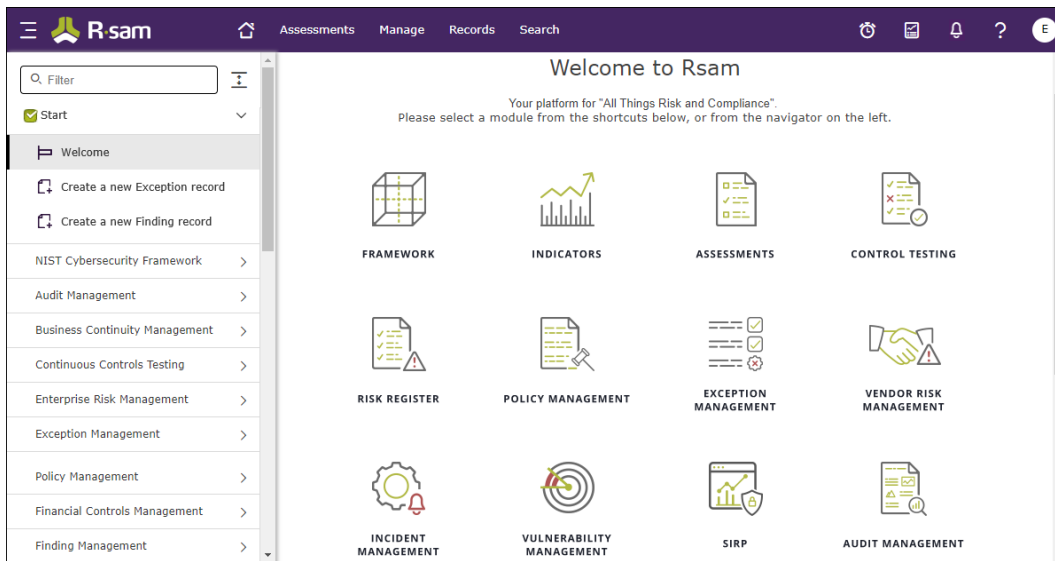
This section details some of the major enhancements in the previous Rsam 9.2 releases.

User Interface Enhancements

- Improved **Sign In** page.
- **Menu bar** and **Left Navigation pane**

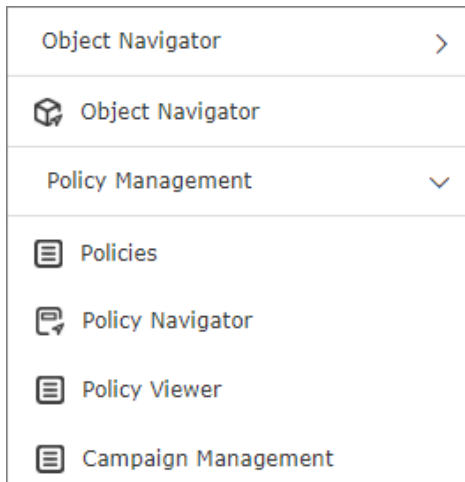
The menu bar was redesigned with newer icons for easier navigation.

Home (🏠), **Reports** (📄), and the **Scheduler** (🕒) modules were introduced as direct link icons on the menu bar.



- **Add Icons for Home Page tabs**

You can add icons to represent the home page tabs on the left navigation pane. The icons can be added by navigating to **Manage > Administration > Reports & Views > Home Page**, selecting or adding the required home page tab and clicking the **Choose Icon** button.



Integration with HighBond

Rsam was acquired by **ACL** and we integrated the power of the Rsam and HighBond platforms.

Customers can opt to have the HighBond integration deployed by contacting the *Rsam Customer Support Team*.

Custom Logo for Top Menu

You can now upload custom logos to be displayed in the Rsam top menu.